



CALDERA EPMT

Engineering Progress and Document Management Tool

The simple art of managing your Project
"Within Budget and On Schedule"

EPCFocus Sdn. Bhd.

Box #313, Lot 5.42, 5th floor
Wisma Central, Jalan Ampang,
50450 Kuala Lumpur, Malaysia
Tel : +60321612717
Email : info@epc-intl.com

For more information, please visit us at www.epc-intl.com

CALDERA EPMT

Engineering Progress & Document Management Tool

The simple art of managing your Project
“Within Budget and On Schedule”



OVERVIEW CALDERA EPMT

EPMT is an integrated Engineering document management system that combines major functions of the following into one:

- Planning – Man-hours and Resources allocation; Progress and Productivity Measurement; Schedule interface
- Document Control – Document Transmission; Storage (original and commented); MDR* Management
- Engineering – Setup MDR; Start, Issue and Review Documents; Productivity Management; Document ‘Hold’ Management

CAPABILITIES

- Produce an integrated Project MDR that is automatically updated in conjunction with DCC activities (actual document transmittance, additions/cancellations of documents etc.).
- Integration of major Discipline functions such as Project Controls, Document Control and Engineering.
- Providing key Engineering Management functions – Cost (Progress & Productivity), Schedule (‘Baselining’ and Forecasting Engineering activity dates Schedule interface for Actual dates).
- Easy access to physical documents (downloading all Project documents) – available on desktop and Web.
- Provides comprehensive Document status management (Doc count, rev history, rev cycle times etc.) and reporting (customized to fit Business Operations).
- Provide Benchmarking Productivity ‘Norms’ based on actual Project historical data.

ADVANTAGES

- Generating Project deliverables whilst minimizing laborious and redundant work processes amongst multiple discipline functions - improving productivity and efficiency on Project Execution.
- Providing ‘All in one place’ auditable, traceable and transparent process and data as well as improving interface with Clients.
- Generating comprehensive reports and form templates which are fully customizable to suit any Business operations.
- Providing Management with critical information Dashboard / Reports.
- Automatically notify users of document transmissions through in-built e-mailing functions. Ability to carry out Project analysis at the most detailed levels.
- Providing flexibility to set up multiple Engineering Milestone Gates in conjunction with Document Types.

CALDERA EPMT

Engineering Progress & Document Management Tool

The simple art of managing your Project
"Within Budget and On Schedule"



CALDERA EPMT REPORTS

REPORTS

Manhours and Progress Report

- Earned value S-Curve by discipline
- Overall S-Curve
- Manhours Histogram by Discipline
- Overall Manhours Histogram
- Manpower Histogram by Discipline
- Overall Manpower Histogram

Document Count Report

- Document Count Report by Document Type
- Document Count Report by Discipline
- Document Hold Update Report
- Document Hold Register

Progress & Productivity Report

- Project Progress and Productivity
- Discipline Progress Analysis Cumulative.
- Schedule Activity Progress Cumulative Group by CTR.
- Schedule Activity Progress Cumulative Group by Discipline
- CTR Progress Analysis Cumulative.

PROJECT EXECUTION

- Document Transmittal
 - Document Transmittal Report
 - Document Return Status (Transmittal)
 - Acknowledge Status
- Document Routing
 - Document Routing
 - Document Return Status
 - Document Return Status Summary
 - Document Revision History
 - Document Cancellation
 - Pending Document Review
- Planning
 - Lead Adjustment Report
- MDR Report
 - MDR External Report (for Client)
 - MDR Internal Report



Engineering Progress & Document Management Tool

The simple art of managing your Project
"Within Budget and On Schedule"



HARDWARE REQUIREMENT

SERVER REQUIREMENT

CPU socket:

- 2 x Intel Core 2 (2.66 Ghz, 128K cache) (Minimum)
- CPU: Quad 2GHz+ CPU (Recommended)

Memory (RAM):

- 2 GB (Minimum)
- 16 GB (Recommended)

Hard disks and available storage space:

- 160 GB hard disk with a 60 GB system partition (Minimum)
- 1 TB (Recommended)

CLIENT REQUIREMENT

CPU socket:

- 1 gigahertz (GHz) or faster 32-bit (x86) or 64-bit (x64) processor

Memory (RAM):

- 1 gigabyte (GB) RAM (32-bit) or 2 GB RAM (64-bit)

Hard disks and available storage space:

- 16 GB available hard disk space (32-bit) or 20 GB (64-bit)

SOFTWARE REQUIREMENT

SERVER REQUIREMENT

Windows Operating System Clients:

- Windows 2012 Server
- Windows 2008 server
- Windows 2003 Server
- Ubuntu Server (For Linux)

Database Server:

- Postgresql Server
- SQL Server

FTP Server:

- FTP Server
- Xampp FTP Server

IIS Server:

- IIS Server (any version)

DotNet Framework:

- DotNet Framework 4.0
- DotNet Framework 4.5

CLIENT REQUIREMENT

Windows Operating System Clients:

- Windows 7 operating system or higher

Web Browser

- Internet Explorer 9 or higher
- Mozilla Firefox web browser
- Google Chrome (any version)

Microsoft Office:

Microsoft Office (Any version)

Email:

Microsoft Exchange (any version)

CALDERA EPMT

Engineering Progress & Document Management Tool

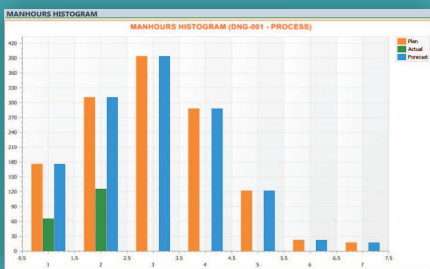
The simple art of managing your Project
"Within Budget and On Schedule"



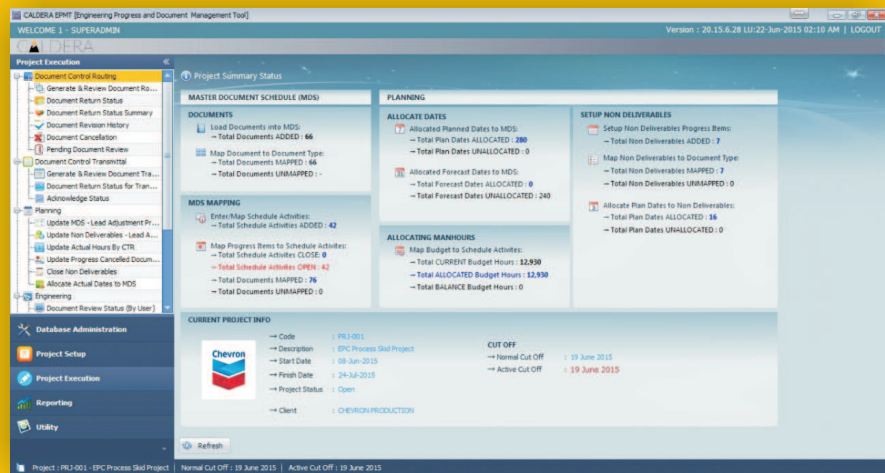
PRODUCT SCREENSHOT

LOGIN

MAN HOURS HISTOGRAM



DASHBOARD



WEB REPORTING

Document No.	Document Reference	Document Desc	Sheet	Revision	Issued Date	Due Date	Original File
001	ADMIN DOC.1	ADMIN DOC.1	A1	28 Mar 2015	31 Mar 2015		DNR TEST DOC - ADMIN.1.docx
002	ADMIN DOC.2	ADMIN DOC.2	A1	28 Mar 2015	31 Mar 2015		DNR TEST DOC - ADMIN.2.docx
001	CONTRACT DOC.1	CONTRACT DOC.1	A1	28 Mar 2015	31 Mar 2015		DNR TEST DOC - CONTR.1.docx
001	CONTRACT DOC.1	CONTRACT DOC.1	A1	28 Mar 2015	31 Mar 2015		DNR TEST DOC - CONTR.1.docx
001	ADMIN DOC.1	ADMIN DOC.1	A1	28 Mar 2015	31 Mar 2015		DNR TEST DOC - ADMIN.1.docx
002	ADMIN DOC.2	ADMIN DOC.2	A1	28 Mar 2015	31 Mar 2015		DNR TEST DOC - ADMIN.2.docx
002	CONTRACT DOC.2	CONTRACT DOC.2	A1	28 Mar 2015	31 Mar 2015		DNR TEST DOC - CONTR.2.docx

DESKTOP REPORTING

